

Fishable-Swimmable: Perfect Together

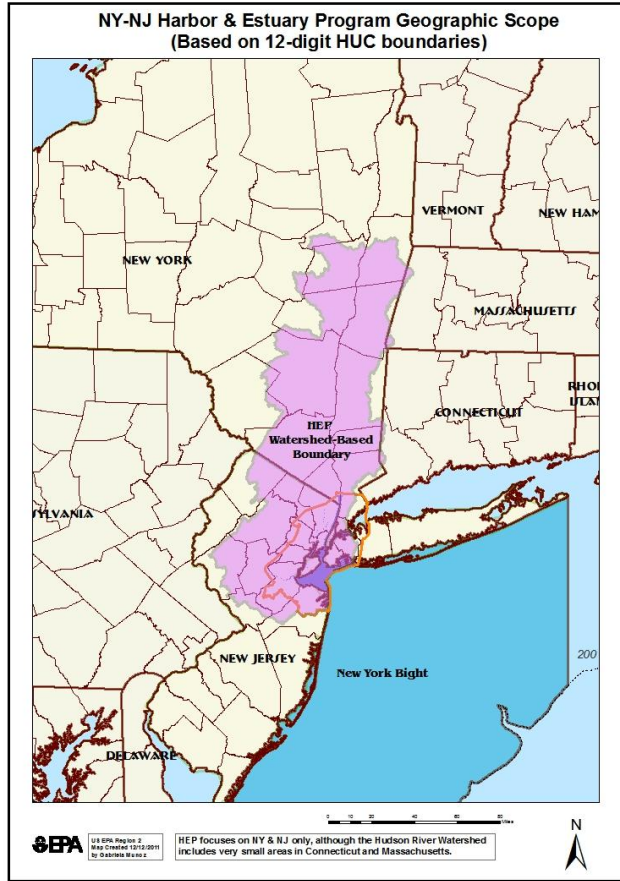
Hudson River Environmental Society 40th Anniversary of the Clean Water Act: Looking Forward

Douglas Pabst,
Team Leader, Dredging Sediments and Oceans Team
EPA Region 2
Senior Policy Advisor
New York-New Jersey Harbor and Estuary Program
212-637-3797
pabst.douglas@epa.gov





New York - New Jersey
Harbor & Estuary Program
www.harborestuary.org





Federal Water Pollution Control Act Amendments—1972

- **Objective: restore and maintain the chemical, physical, and biological integrity of the Nation's waters**
- **National Goals and Policies include:**
 - **eliminate the discharge of pollutants to navigable waters by 1985**
 - **as an interim goal, achieve by July 1, 1983, wherever attainable, a level of water quality that provides for the protection and propagation of fish, shellfish, and wildlife and provides for recreation in and on the water**
 - **prohibit the discharge of toxic pollutants in toxic amounts**

Main Pollutant Sources

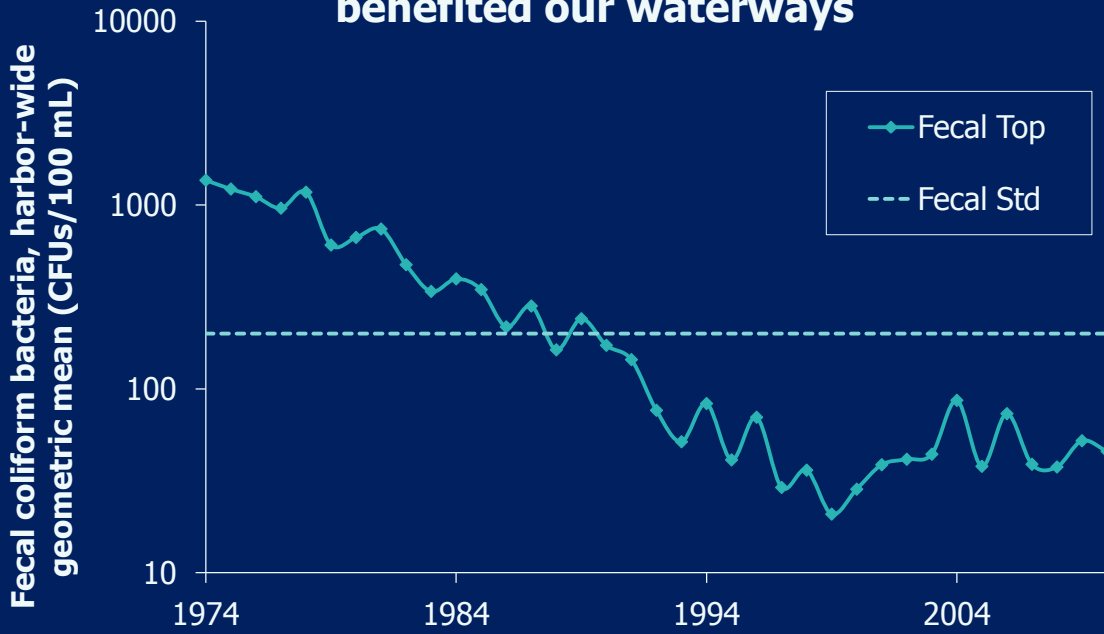
- Over 700 CSOs
- Non-Point Stormwater
- 24 POTWs (2.5 BGD)

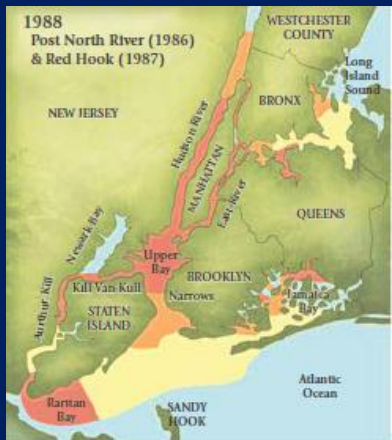
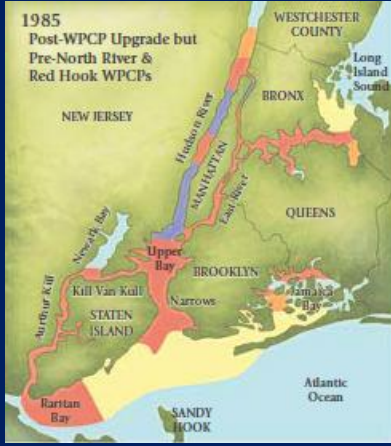
Main Uses Impaired

- Shellfishing
- Public and Private Swimming Beaches
- Secondary Contact Recreation

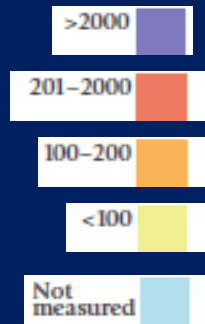


Sewage treatment improvements have benefited our waterways

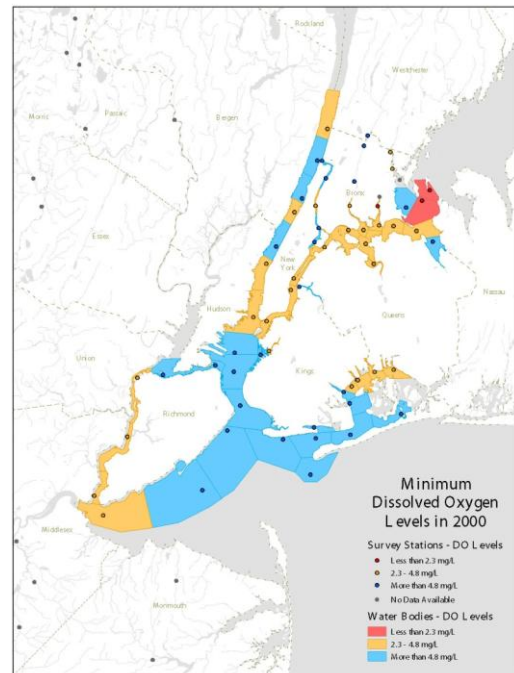
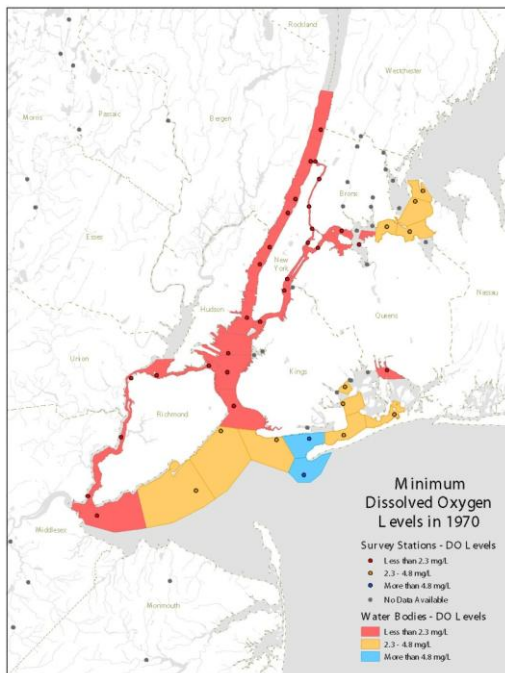




Summer geometric means of fecal coliform concentrations (cells/100 mL) in Harbor surface waters in four selected years.

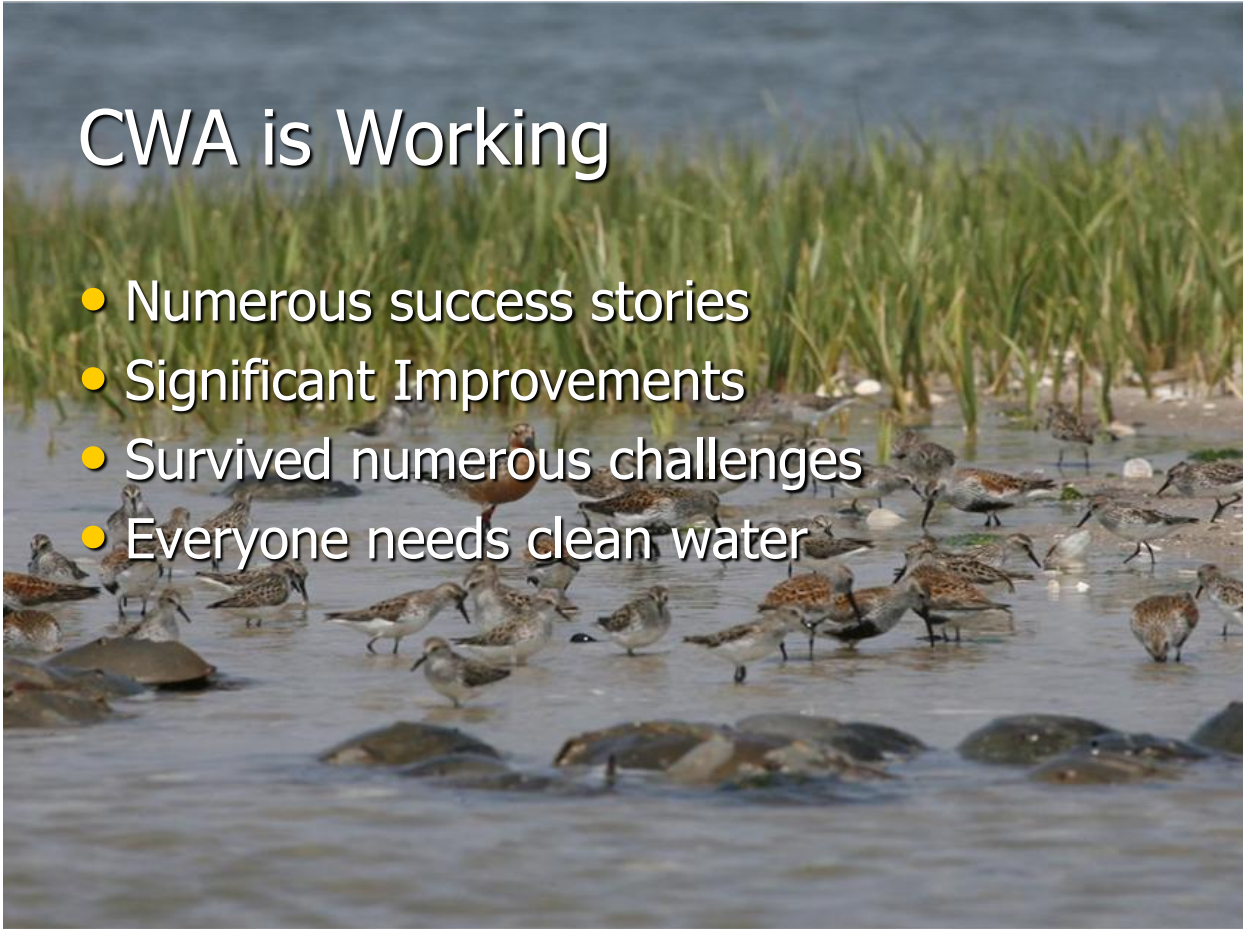


Improvement in Dissolved Oxygen Levels 1970 - 2000



CWA is Working

- Numerous success stories
- Significant Improvements
- Survived numerous challenges
- Everyone needs clean water



What is Fishable-Swimmable

- Numeric
- Narrative
- Average
- Statistical
- Based on public opinion
- Enigma
- Paradox
- All of the above



Don Riepe

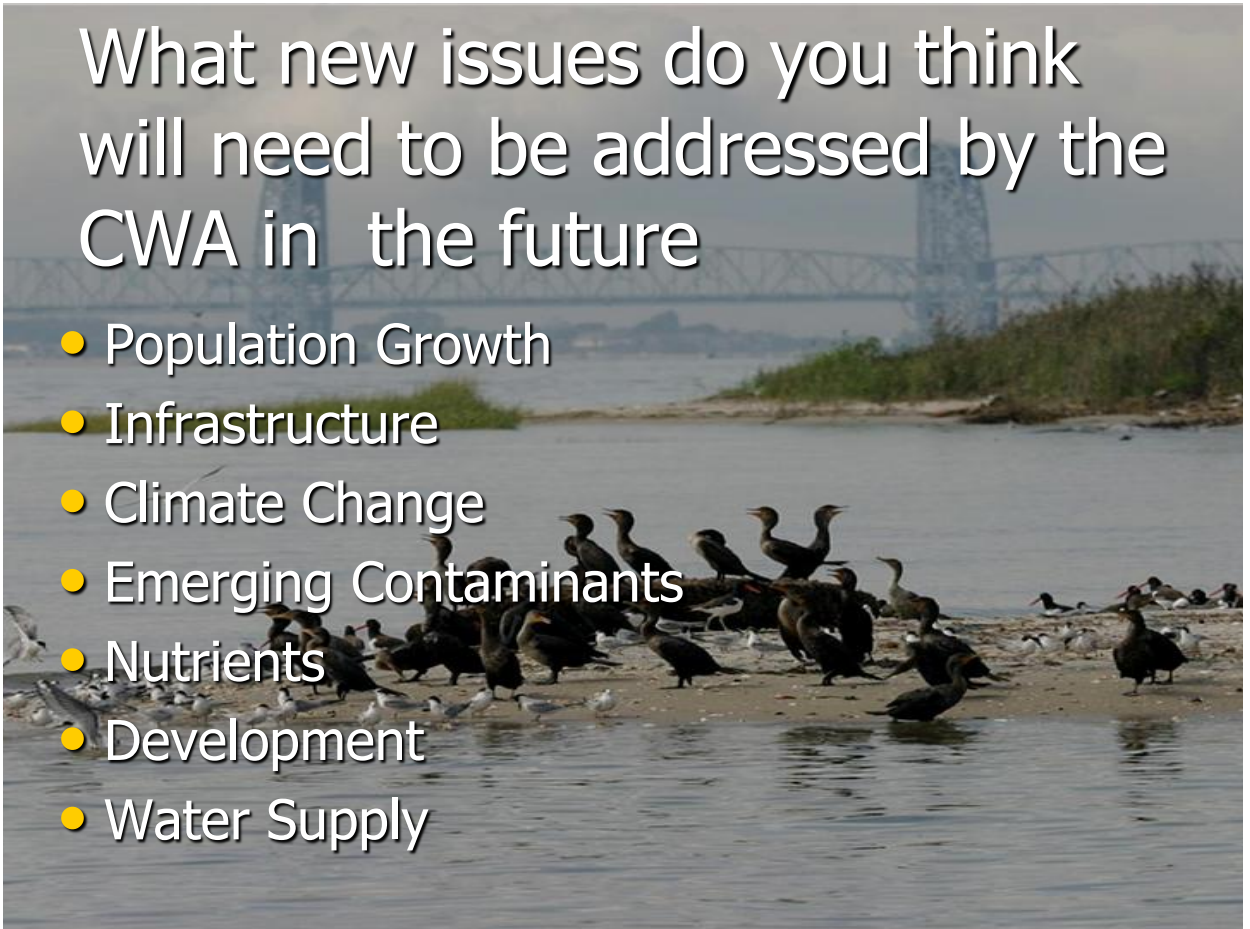
An aerial photograph of a city waterfront, likely New York City, showing a marina with numerous boats, a road, and a city skyline in the background. The text is overlaid on the image.

Fishable-Swimmable: Perfect Together

- If We Don't Know Where We're Going, Any Road Will Get Us There
- Needs to be understandable
- Incremental improvements are better than no improvements, sometimes...
- Managers must prioritize
- Everything has a price
- Requires sacrifice
- Perfection can be the enemy of the good
- Regulations will only get us so far

What new issues do you think will need to be addressed by the CWA in the future

- Population Growth
- Infrastructure
- Climate Change
- Emerging Contaminants
- Nutrients
- Development
- Water Supply

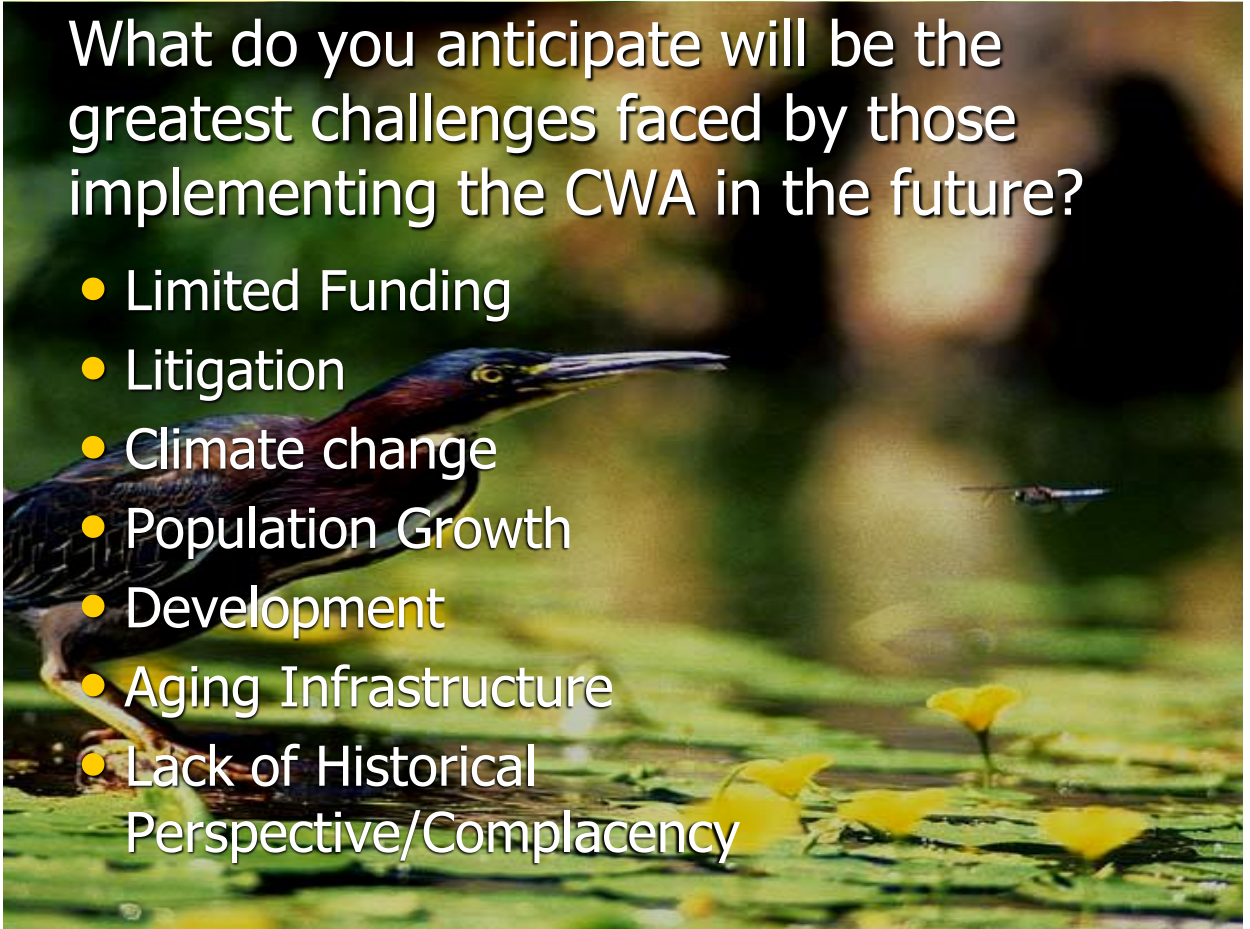



How would you propose to set priorities for future CWA activities?

- Scenario Based
- Vulnerability prioritized/Triage
- Efficiency
- Bottom-up
- Education
- People will have to pay for what they want

What do you anticipate will be the greatest challenges faced by those implementing the CWA in the future?

- Limited Funding
- Litigation
- Climate change
- Population Growth
- Development
- Aging Infrastructure
- Lack of Historical Perspective/Complacency





How would you propose to best meet these challenges?

- Strategic Planning
- Adaptive management
- Education
- Stewardship
- Ecosystem Based Management
- Sustainability
- Conservation
- Economic Valuation

Thank You

Questions?

