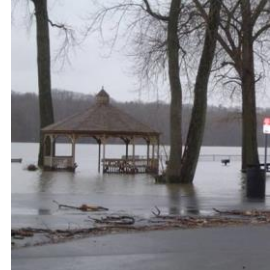




Department of
Environmental
Conservation

Preparing for a Wetter New York



Mark Lowery

Assistant Director

Office of Climate Change

New York State Department of Environmental Conservation

IPCC 1.5°C Special Report

If countries fulfill current climate commitments* but fail to raise ambition:



If the world starts reducing emissions now and reaches net-zero around mid-century:

WARMING CAN BE LIMITED TO 1.5°C

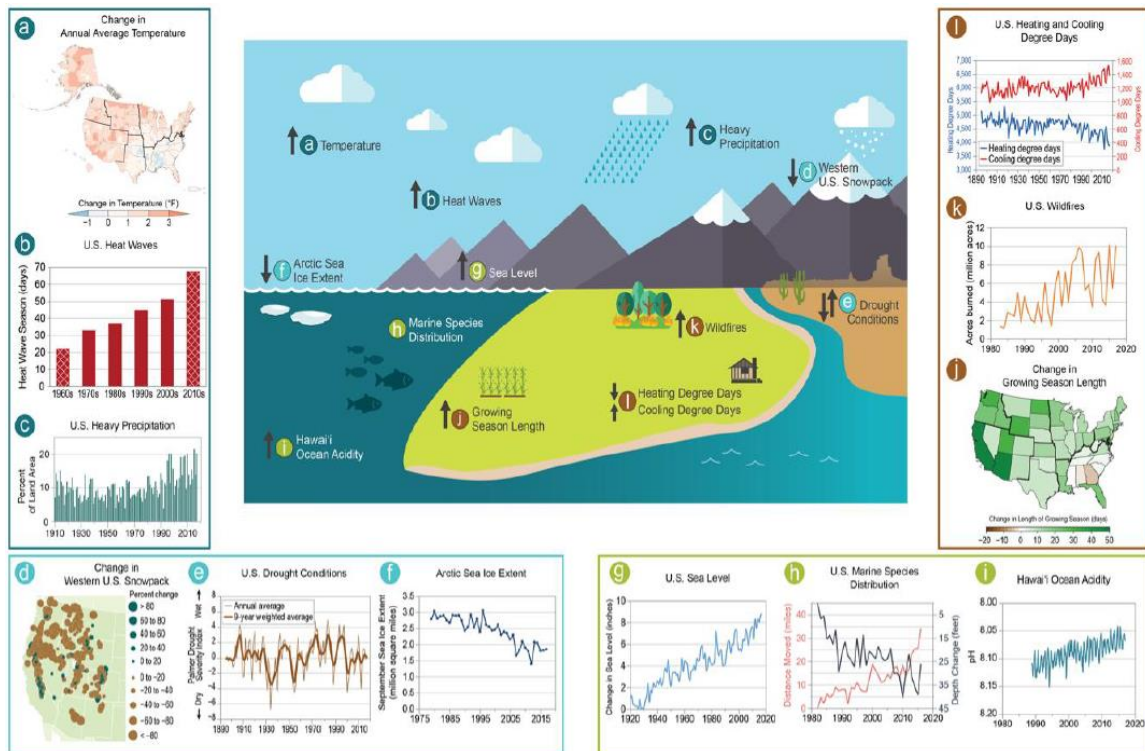
www.wri.org

- Current COP21 pledges lock in 1.5°C by 2030
- Meeting either 1.5 or 2.0 °C will require unprecedented transformation of energy system



Department of
Environmental
Conservation

NCA4: Observed Change



Key NE Vulnerabilities:

- Rural industries
- Marine & coastal environments
- Critical urban activities & infrastructure
- Public health

U.S. Global Change Research Program



Department of
Environmental
Conservation

Effects in New York

Higher temperatures

More precipitation

More frequent drought

Sea-level rise

More extreme events:

- Floods
- Heat
- Ice/snow
- Winds
- Coastal storms
- Disease and pests

- Risks to people
- Stressed infrastructure
- Agricultural and ecosystem effects



Conservation Value Notes



Greenpeace International



NYSDEC



PhillipC/flickr



T.B. Ryder



NYSDEC



© George Shinn



NYSDEC



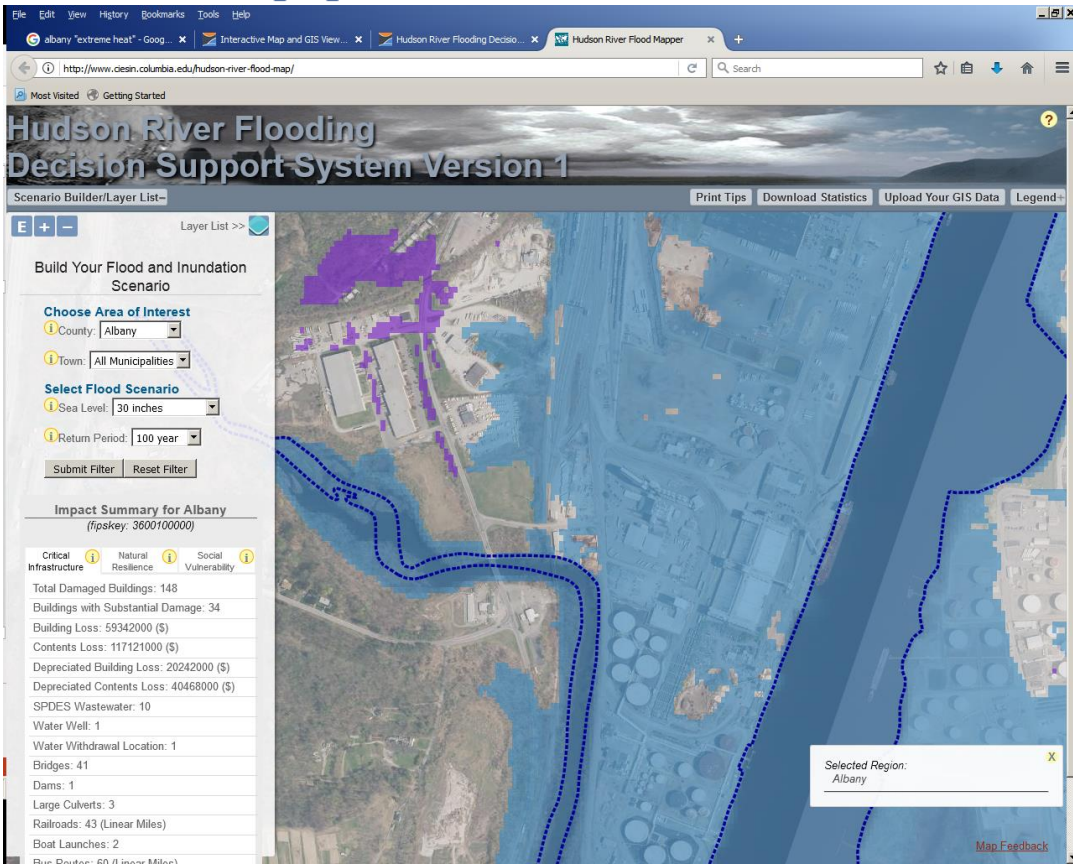
NYSDEC



Department of Environmental Conservation

Unstoppable Sea-level Rise

- Loss of populated areas
- Loss of tidal ecosystems
- Threats to infrastructure
- Salt-water intrusion



Projected Sea-level Rise, Mid-Hudson
(inches of rise relative to 2000-2004 baseline)

	Low	Low-medium	Medium	High-medium	High
2020s	1	3	5	7	9
2050s	5	9	14	19	27
2080s	10	14	25	36	54
2100	11	18	32	46	71

New York State Programs

State and local programs now more critical



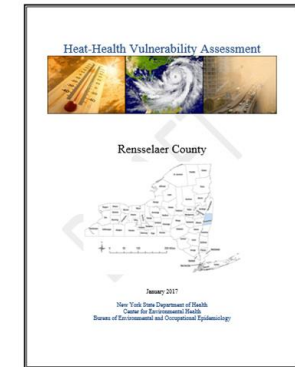
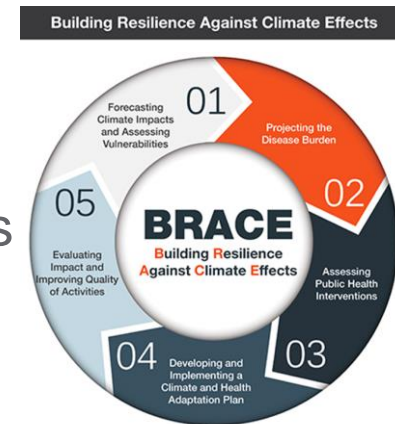
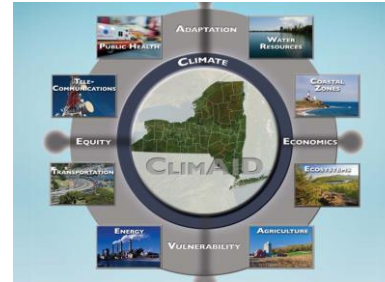
“Climate change is an issue of society’s sustainability – and to deny that climate change is real is to deny reason. Today, New York is stepping up. We are demonstrating the leadership and focus that this issue demands. We are joining together and committing ourselves to tackling climate change and showing the nation what is possible. Now it is up to world leaders to follow suit.”

-Governor Andrew Cuomo

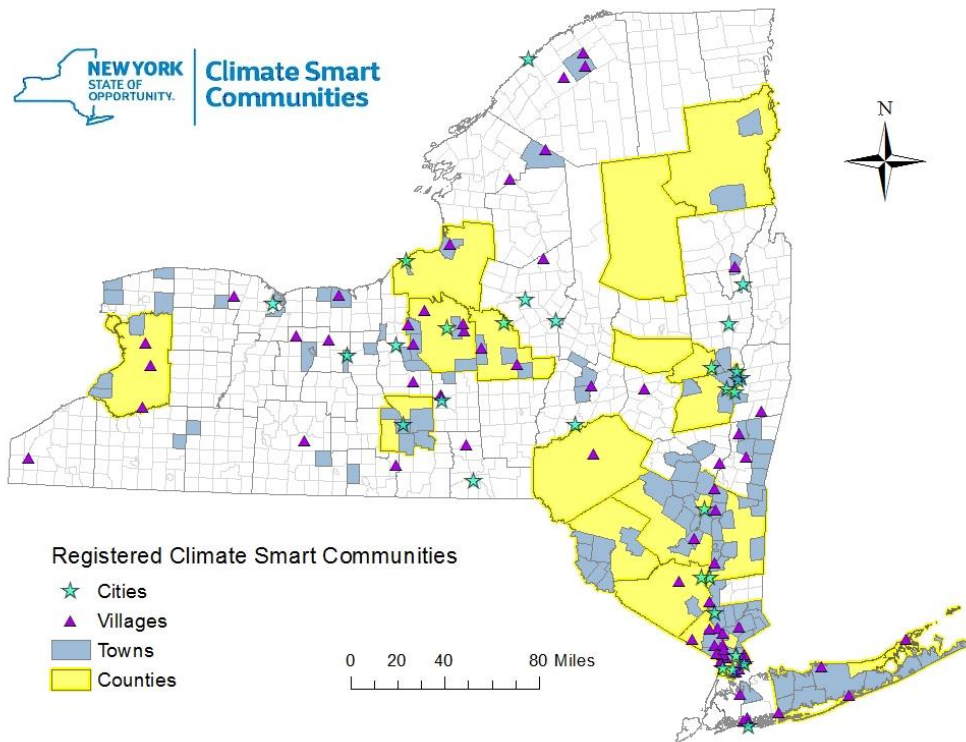


New York State Adaptation Programs

- Integrated Vulnerability Assessment (ClimAID)
- Interagency Climate Adaptation and Resilience Work Group
- Climate Risk and Resiliency Act
- NYSDOH County-Heat Health Profiles
- Climate Smart Communities
- State Agency Vulnerability Assessments
- Information Resources



Climate Smart Communities



- **252 Registered** (since 2009)
 - 39% of New Yorkers live in these “pledged” communities (over 7.6 million people)
 - 16% of ~1607 local gov’ts
- **24 Certified** (since 2014)
 - Leaders who have documented progress

Full list at <https://climatesmart.ny.gov/actions-certification/participating-communities/>

Climate Smart Resiliency Planning: A Planning Evaluation Tool for New York State Communities

Checklists:

1. Vulnerability & Risk Assessment

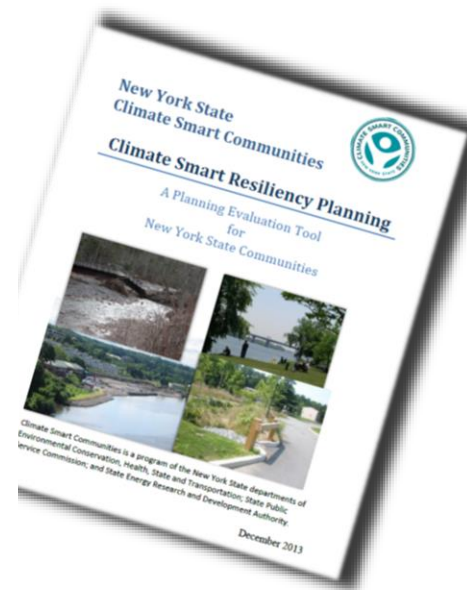
2. Public Outreach & Engagement

3. Planning Integration

4. Disaster Preparedness & Recovery

5. Hazard Mitigation

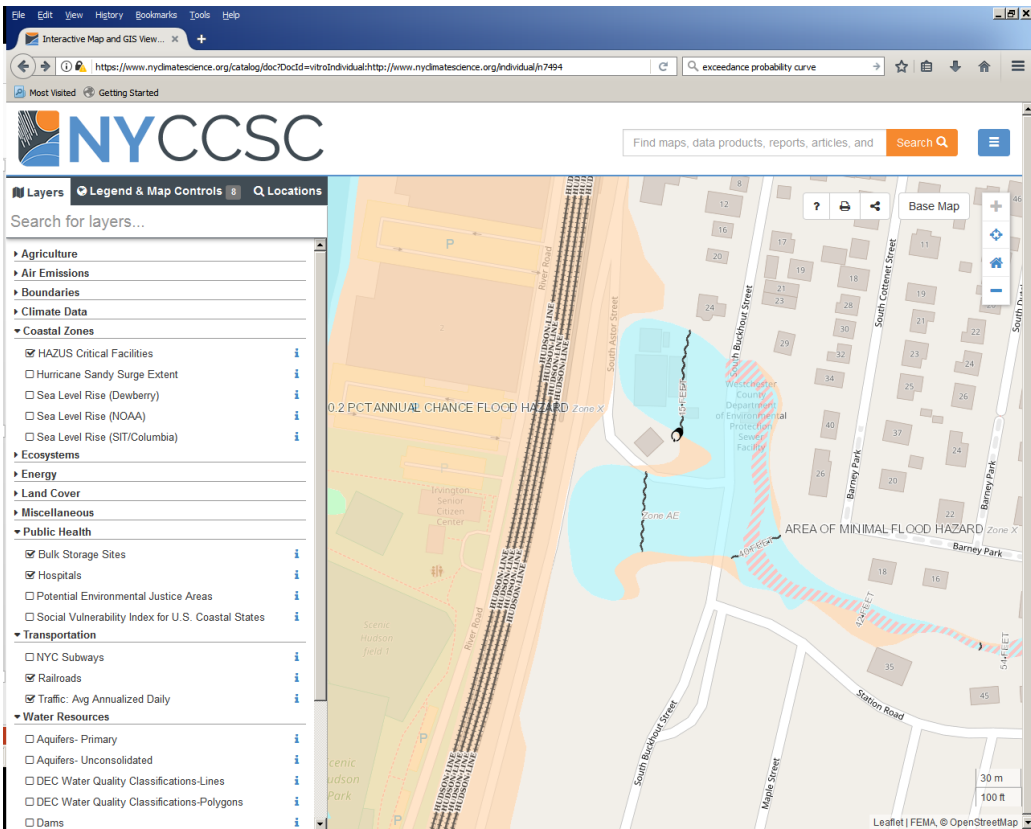
Section 2 – Risk and Vulnerability Assessments	Yes	No	Other	N/A	Notes
2.1 Does the municipality have a localized hazard risk and vulnerability assessment?			X		In progress- Waterfront Resiliency Task Force (DOS hazard risk assessment, COAST vulnerability assessment)
2.2 Have current and future climate hazards been identified?			X		Some- sea level rise flooding, in progress- Waterfront Resiliency Task Force
2.3 Are previously identified coastal hazards and disasters mapped through historical information, existing plans and reports, scientific knowledge, and local knowledge?		X			LWRP describes some coastal (and riverine) hazards, but no maps
2.4 Are hazard probability, frequency, magnitude and duration defined?			X		Partially- in progress- Waterfront Resiliency Task Force
2.5 Is coastal erosion and/or shoreline change identified as a hazard?	X				LWRP- refers to coastal erosion areas in recommending non-construction mitigation measures and site planning (coastal erosion protection is required in waterfront site plans)
2.6 Is sea level rise identified as a hazard?			X		In progress- Waterfront Resiliency Task Force
2.7 Has the municipality adopted projections of sea level rise?		X			
2.8 Are extreme temperature and heat waves identified as hazards?		X			
2.9 Are extreme precipitation and drought identified as hazards?		X			
2.10 Are conditions identified that could amplify the effect of a hazard, e.g., storm surge inundation at a high tide or erosion of stabilized shorelines?	X				LWRP- coastal and slope erosion identified as hazards, but not specifically addressed as amplifying factors; In progress- Waterfront Resiliency Task Force (identified storm surge)
2.11 Have potential vulnerabilities been prioritized?			X		Partially- in progress- Waterfront Resiliency Task Force
Probability of a given climate hazard, e.g., high, medium, low			X		
Likelihood of effect occurrence, e.g., virtually certain/already occurring, high, moderate, low			X		
Magnitude of consequence, e.g., internal operations, capital and operating costs, number of people affected, public health, economy, and environment		X			
2.12 Have adaptation strategies been identified and categorized?			X		Partially- in progress- Waterfront Resiliency Task Force
Type			X		
Administration			X		
Condition			X		
Timing			X		
Geography			X		
2.13 Have adaptation strategies been evaluated and prioritized?			X		Partially- in progress- Waterfront Resiliency Task Force
Strategy cost			X		
Strategy feasibility			X		
Timing of implementation			X		
Efficacy			X		
Resiliency rating			X		
Co-benefits			X		



NEW YORK
STATE OF
OPPORTUNITY

**Department of
Environmental
Conservation**

NY Climate Change Science Clearinghouse



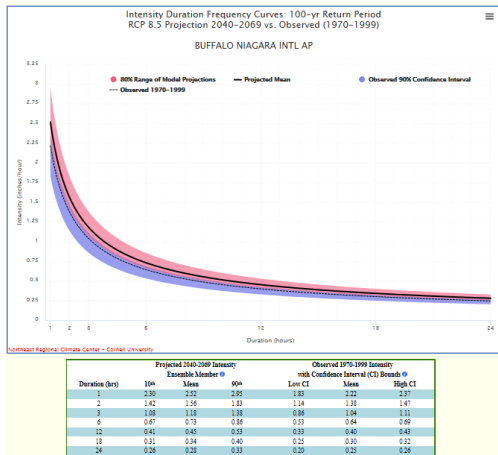
Maps, data and documents to support decision making

<https://www.nyclimatescience.org/>



Department of
Environmental
Conservation

Resources: Future Extreme Precipitation



Statewide Projected Change Maps

SELECT MAP OPTIONS

Return Period

- 2-yr
- 5-yr
- 10-yr
- 25-yr
- 50-yr
- 100-yr

Emission Scenario

- High RCP 8.5
- Low RCP 4.5

Time Period

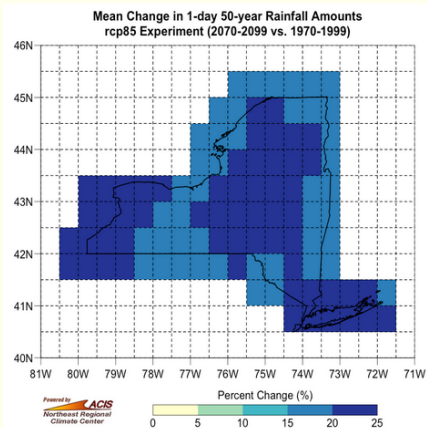
- 2010-2039
- 2040-2069
- 2070-2099

Ensemble Member

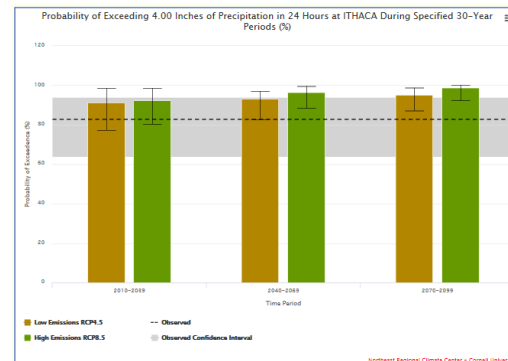
- 10th
- Mean
- 90th

Map Type

- Percent change
- Relative return period



Exceedance Probabilities



	Projected (2010-2039) @			Projected (2040-2069) @			Projected (2070-2099) @		
	Observed (1970-1999) @	RCP 4.5	RCP 8.5	RCP 4.5	RCP 8.5	RCP 4.5	RCP 8.5	RCP 4.5	RCP 8.5
Mean	93	91	92	93	94	95	99	95	99
Lower Bound	64	77	90	83	83	87	87	92	92
Upper Bound	94	98	98	97	99	99	99	100	100

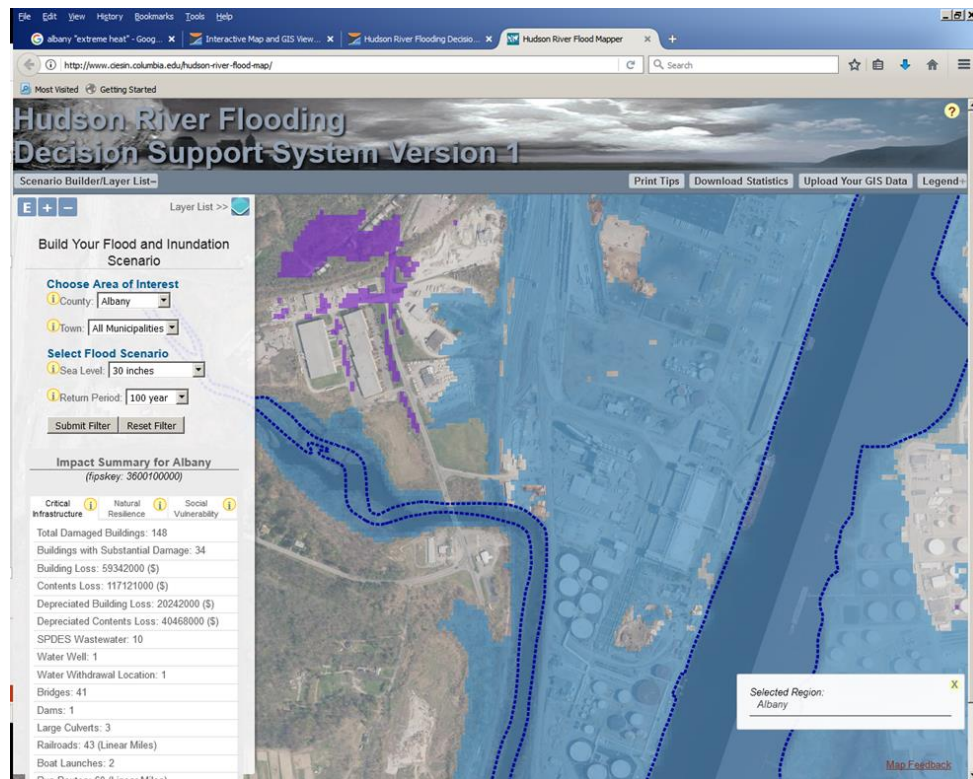
Station-specific IDF Graphs

<http://ny-idf-projections.nrcc.cornell.edu/>

Resources: Hudson River Flooding Decision Support System

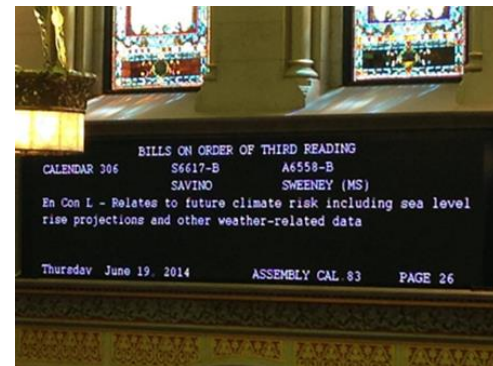
- Available for ten Hudson Valley counties
- Statewide system in progress
- Accessible directly or through NYCCSC

<http://www.ciesin.columbia.edu/hudson-river-flood-map/>



2014 - Community Risk & Resiliency Act

- Requires sea-level rise projections (DEC)
- Requires applicants demonstrate consideration of sea-level rise, storm surge & flooding in specified permits & funding programs, & guidance on implementation (DEC, DOS)
- Adds mitigation of sea-level rise, storm surge & flooding to Smart Growth Public Infrastructure Policy Act criteria (DEC, DOS)
- Requires guidance on use of natural resiliency measures to reduce risk (DEC, DOS)
- Requires model local laws to enhance resiliency (DOS, DEC)



<http://www.dec.ny.gov/energy/102559.html>



NEW YORK
STATE OF
OPPORTUNITY

Department of
Environmental
Conservation

Regulatory Programs Covered by CRRA

DEC Permits

- Oil and natural gas wells
- Major projects:
 - Protection of waters
 - Freshwater wetlands
 - Tidal wetlands
 - Coastal erosion hazard areas
 - Mined land reclamation
 - Sewerage service
 - Liquefied natural gas and liquefied petroleum gas facilities

DEC Facility-siting Regulations

- Hazardous waste transportation, storage and distribution facility siting
- Petroleum bulk storage (including conformity with the uniform fire prevention and building code)
- Hazardous substance bulk storage



CRRA Model Local Laws, Basic Land Use Tools for Resiliency (DOS)

- Chapter 1: Basic Land Use Tools
- Chapter 2: Wetland and Watercourse Protection Measures
- Chapter 3: Coastal Shoreline Protection Measures
- Chapter 4: Management of Floodplain Development
- Chapter 5: Stormwater Control Measures




2015 - Climate Smart NY

- Climate Resilient Farms Program
- State Agency Vulnerability Assessment




2015 - NYSDOH Climate and Health Profile

New York State Department of Health
Building Resilience Against Climate Effects
(BRACE) in New York State



Climate and Health Profile
June 2015




NEW YORK STATE

Services News Government Local

Department of Health Individuals/Families Providers/Professionals

You are here: / Home Page / Environmental Public Health Tracking / County Heat-Health profiles

County Heat-Health Profiles - Rensselaer, NY

These county heat-health profiles have been created by the NYSDOH to assist county agencies to help identify their vulnerable populations and regions within their counties to improve or supplement their heat-adaptation efforts toward reducing the impact of heat on health.

Click on a County on the map to view / Download / print the County Heat-Health Profile



Click here to download census tract level temperature data for a county

Environmental Public Health Tracker
Use this tool to view maps, graphs and tables of select environmental health data.



Department of
Environmental
Conservation

2018 - Resilient NY

“to dramatically enhance community resiliency in the face of extreme weather”

- DEC issue resiliency guidelines (CRRRA State Flood Risk Management Guidance)
- DOS recommend building code updates
- DEC update and improve wetland and coastal risk maps
- State agencies develop individual adaptation plans
- Financial support for local flood resiliency plans
- Emergency flood response training



Department of
Environmental
Conservation

2018 – Mitigate NY

← → ↻ ⓘ https://mitigateny.availabs.org ☆ 📄 🌐 👤 ⋮

NEW YORK STATE MitigateNY

LOGIN SIGN UP

2019 New York State Hazard Mitigation Plan

HOME HAZARDS RISK NYS CAPABILITIES STRATEGIES LOCAL MITIGATION PLANNING ABOUT

■ WELCOME TO MITIGATE NY, NEW YORK STATE'S HAZARD MITIGATION PLANNING WEBSITE!

Assessing Climate Vulnerability

- *What major management challenges do you deal with at work?*
- *What are the ways climate change will affect this work? How will climate change affect my agency's ability to carry out its mission and achieve its strategic goals?*
- *What are the ways to respond to the challenges presented by climate change?*
- Consider human and built assets, natural resources, clients, constituents, customers



Mark Lowery

Office of Climate Change

NYSDEC

625 Broadway

Albany NY 12233-1030

climatechange@dec.ny.gov

Connect with us:

- DEC: www.dec.ny.gov
- Community Risk and Resiliency Act: www.dec.ny.gov/energy/102559.html
- Climate Smart Communities: www.dec.ny.gov/energy/76483.html
- Facebook: www.facebook.com/NYSDEC
- Twitter: twitter.com/NYSDEC
- Flickr: www.flickr.com/photos/nysdec

